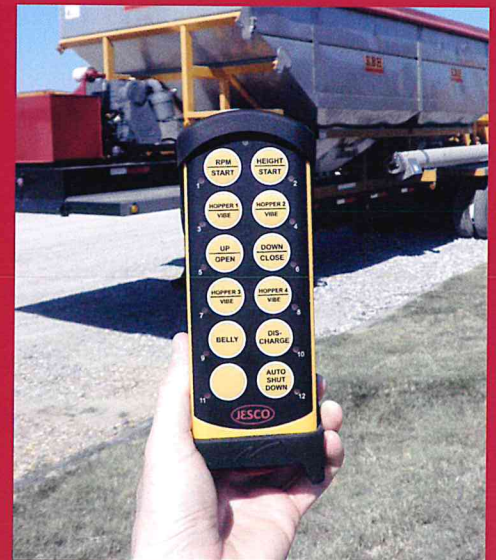




INTRODUCING THE
ALL NEW MODEL
TT3000SF DRY TENDER 3 COMPARTMENT • SIDE DISCHARGE



Also available in Rear Discharge

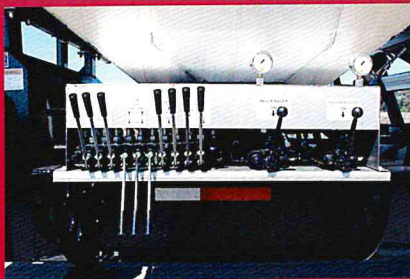
Model TT3000

Optional Wireless Remote

The
KBH
 CLARKSDALE ★ MS
Corporation

(800) 843-5241
www.kbhequipment.com

P.O. Box 670 • 395 Anderson Boulevard • Clarksdale, MS 38614



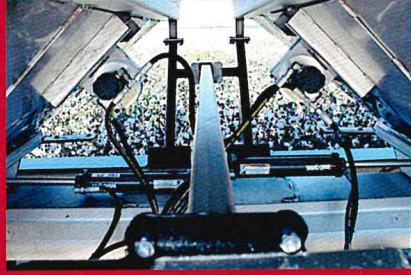
Hydraulic Valve Assembly



Recessed Fuel Tank



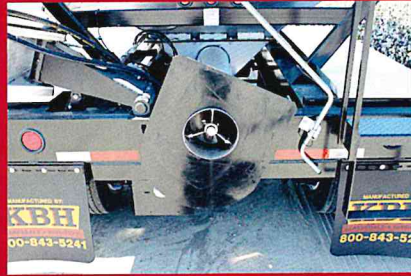
Stainless Bolted Hopper Frame



Hydraulic Vibrators



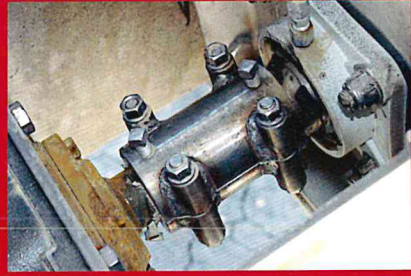
Self-Contained Power Unit



Belly Auger Unload Capability



Safety/Agitation Ports



Two Piece Bolted Couplers



Remote Grease Zerk Station



SRT Spring Assist Tarp



Standard Stainless/Optional Poly Cupped



Height Adjustable Side Discharge

Specifications

Hoppers

- Three 300 Cubic Foot Stainless Hoppers
- 900 Cubic Foot Capacity
- Stainless Hopper Cradle (Bolted)
- Stainless Safety/Agitation Ports
- Hydraulic Hopper Vibrators
- SRT Spring Assist Roll Tarp
- Dump In Height: 10' 5" (Not Including Tarp Bows/End Caps)

Augers

- Stainless Augers and Shafts
- Stainless Two Piece Bolted Auger Couplers
- Discharge Auger Hanger Bearing Bronze Bushing
- Discharge Auger Stainless Lower Bearing
- Remote Grease Zerk Station
- Hydraulic Poly Clean Out Doors
- Unload Rate 2-3 Tons Per Minute
- Rear Discharge Model:
 - Max Unload Height: 15' 3" (6' 0" Reach From Bumper)
 - Min Unload Height: 8' 9" (10' 4" Reach From Bumper)
- Side Discharge Model:
 - Max Unload Height: 14' 7" (10' 2" Reach From Fender)
 - Min Unload Height: 9' 2" (13' 2" Reach From Fender)

Trailer

- Length:
 - Rear Model 38' Long
 - Side Model 32' Long
- Empty Weight:
 - Rear Model 16,180 lbs
 - Side Model 16,340 lbs
- 255-70R/22.5 Radial Tires
- Epoxy Primer Polyurethane Paint
- Cast Iron Axle Hangers
- Stainless Front and Rear Fenders
- Stainless Axle/Air Tank and Engine Cover

